

Location:	New Orleans, Louisiana, USA
Date:	December 2006
System Used:	SWATHplus-H 468 kHz
Ancillaries:	CodaOctopus F180

SWATHplus-H 468 kHz trial for John Chance Land Survey on the Gulf Outlet Canal in New Orleans, Louisiana. Survey consisted of a number of small area surveys along the canal and a survey along both shores of the Mississippi River in New Orleans. Survey areas ranged from 1km to 4km in length, in water depths of 0m to 45m. Surveys undertaken in a day, with a day of preparation and boat mobilisation in Lafayette. Motion sensing and positioning using a Coda-Octopus F180.

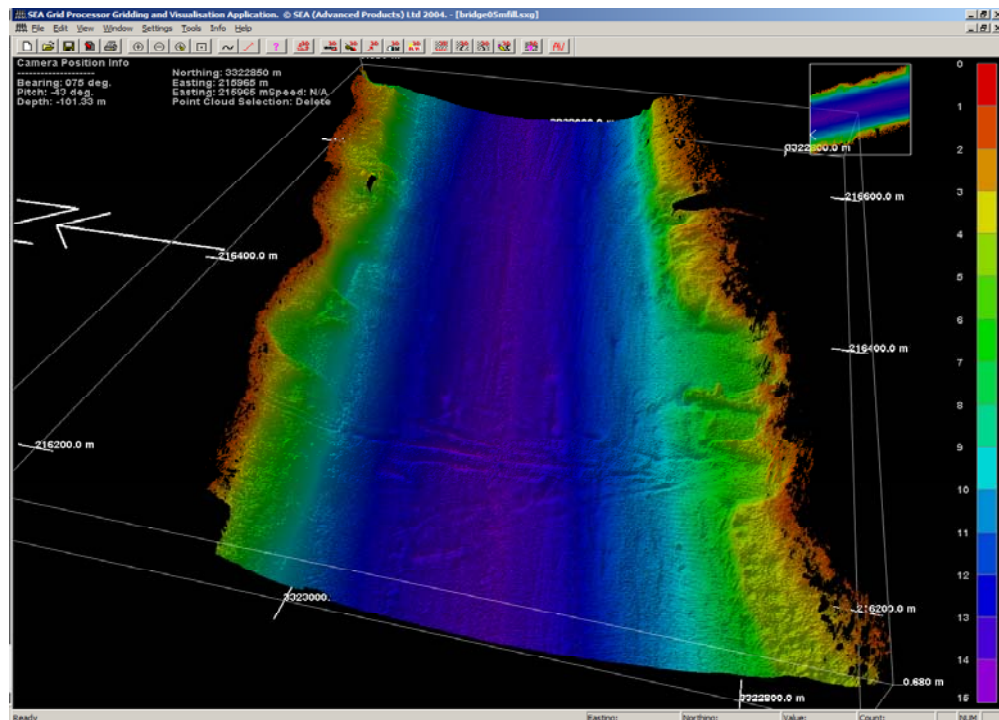


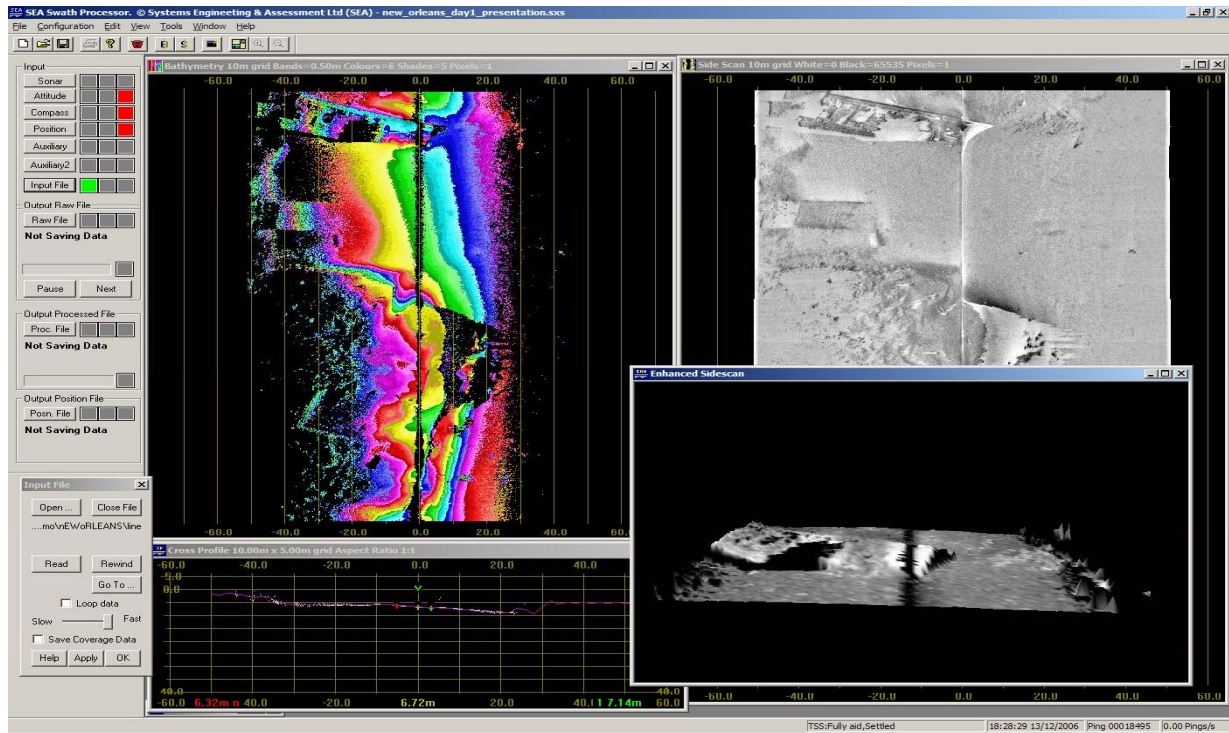
Bridge survey site on Gulf Outlet Canal



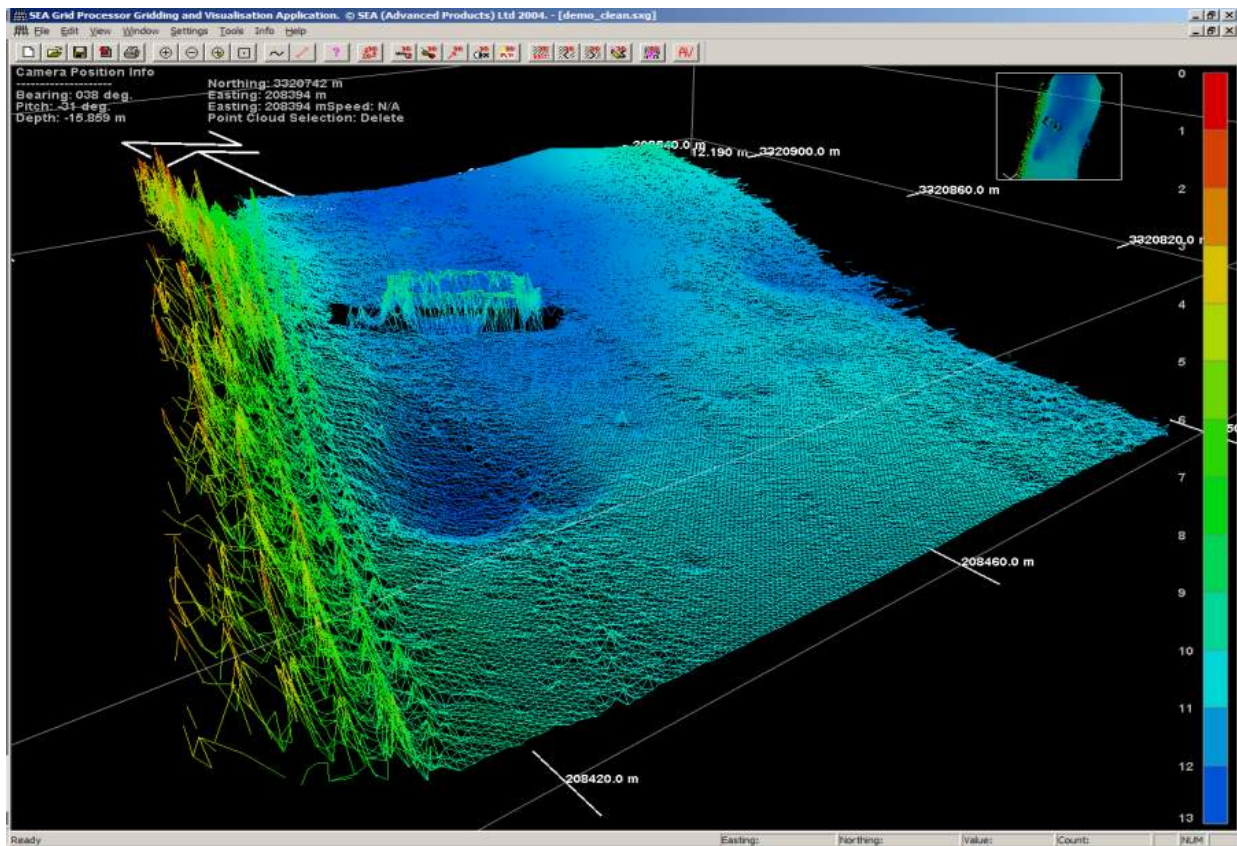
Damaged wharfs along Mississippi

3d bathymetry of Gulf Outlet Canal bridge survey site

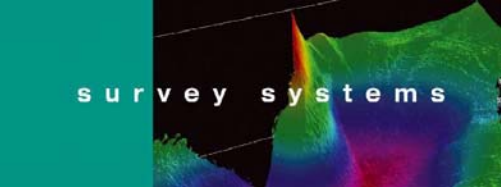




Real-time views of barge wreck on Gulf Outlet Canal



3d bathymetry view of barge wreck close to a quay



Survey Note No.: 0602



Email: info@sea.co.uk

SEA Copyright 2008



Web: www.sea.co.uk