

Location:	Lagos, Nigeria
Date:	October 2006
System Used:	SWATH<i>plus</i>-H 468 kHz
Ancillaries:	TSS DMS205, CSI Vector

SWATH*plus*-H harbour pre-dredge survey for GEMS Survey Ltd. The area surveyed was approximately 12km by 1km, with an 8km by 500m side channel in depths of 0m to 33m. Survey undertaken over a 5-day period between other survey vessel commitments. Position supplied by the local LRK system. TSS DMS205 motion sensor and CSI Vector heading sensor were used.



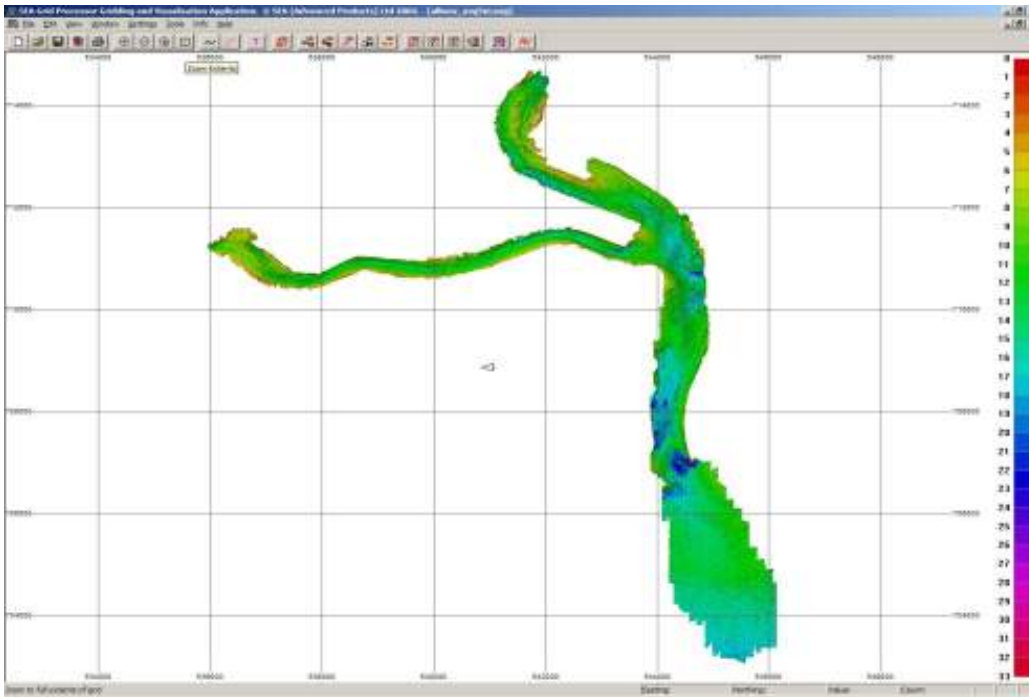
Channel entrance to Lagos Harbour showing LRK station tower on far right.



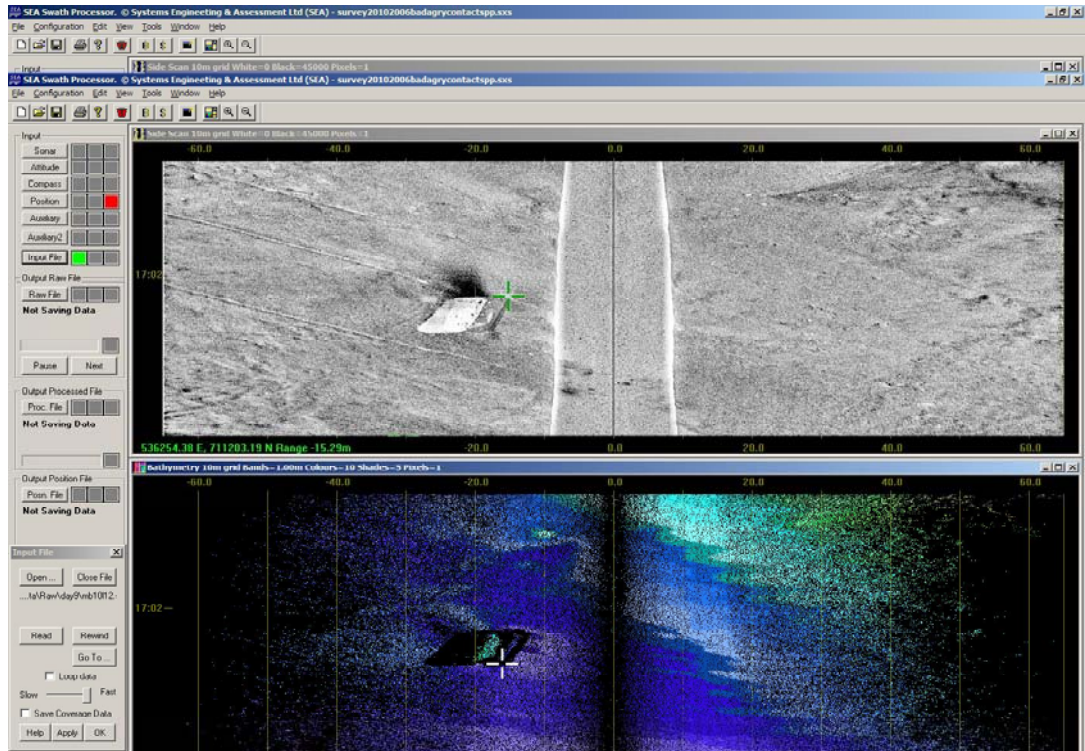
Survey vessel



Survey Note No.: 0603



Bathymetry of Lagos Harbour



Real-time image of a sunken barge