

Location:	Imperia, Italy
Date:	September 2006
System Used:	SWATHplus-L 117 kHz
Ancillaries:	TSS DMS05, Hemisphere Vector

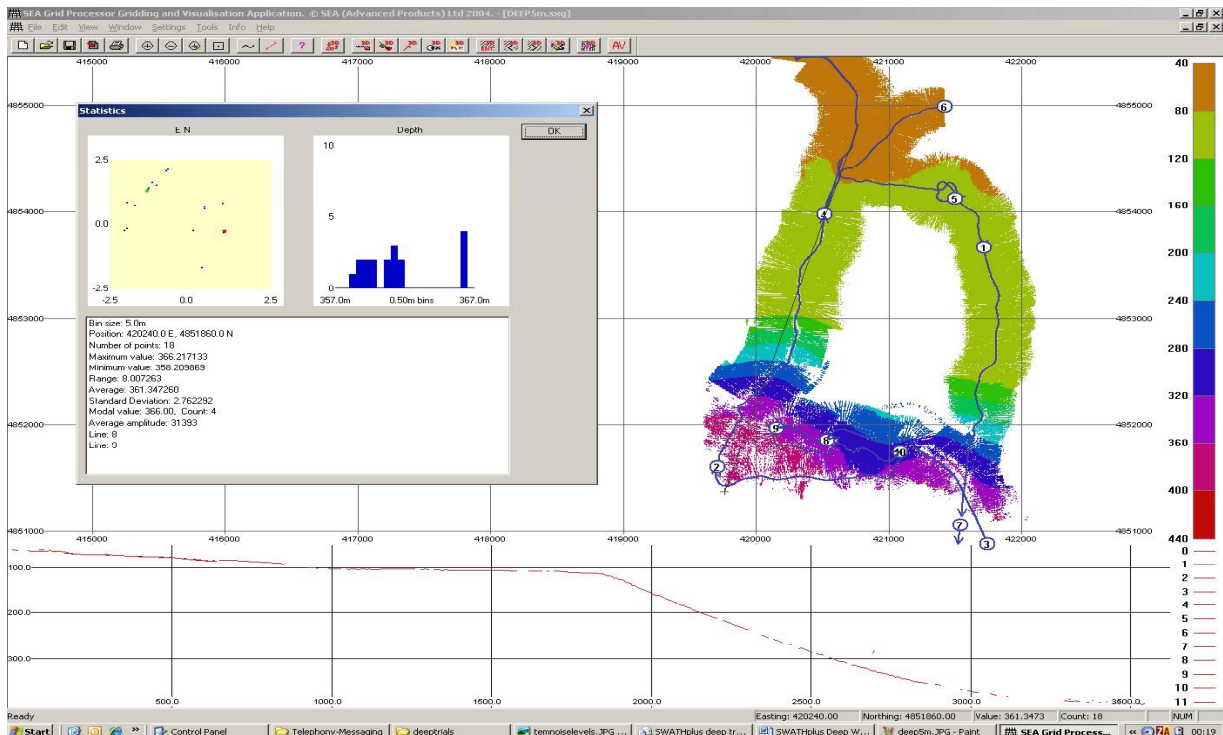
SWATHplus-L trial survey to test deep-water capability on coast off Imperia in Italy. Survey consisted of track line out into deep water and back with a few short lines along the 360m contour line. Water depths from 0m to 390m. Survey undertaken in a day, with one day's preparation and mobilisation in Imperia. Motion sensing using a TSS DMS05 and positioning and heading using a Hemisphere Vector dual antenna heading sensor.



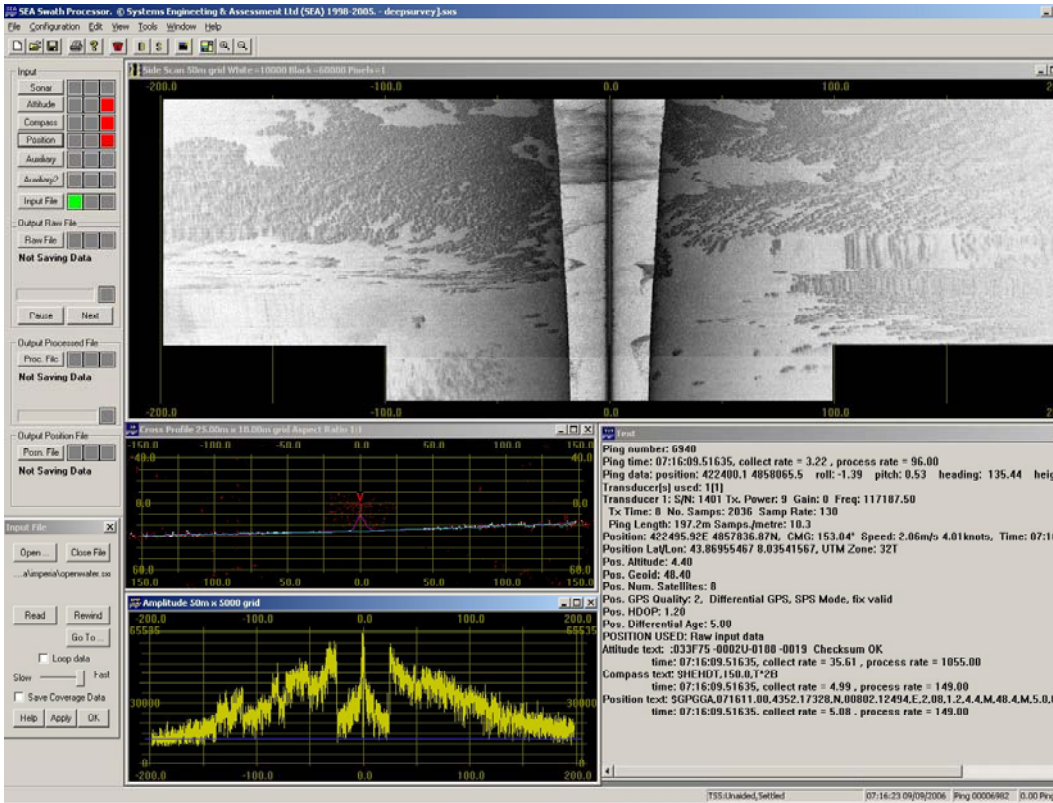
SWATHplus-L bowmount



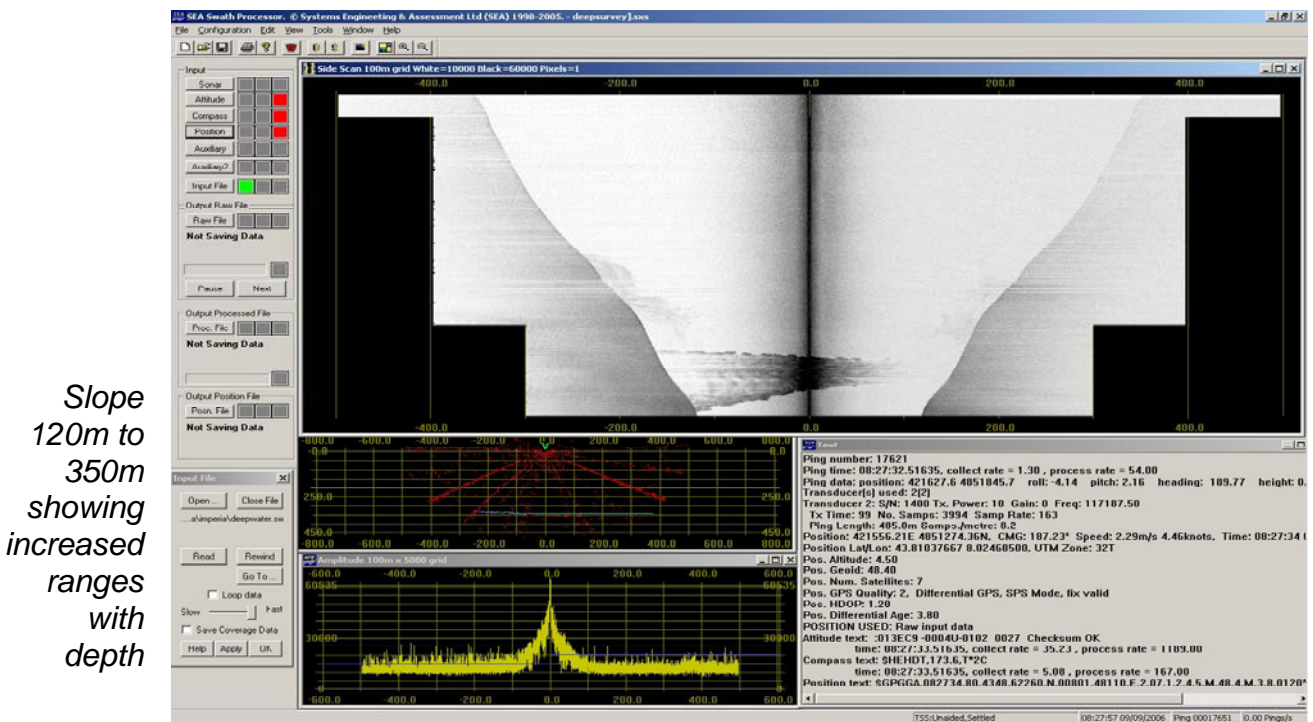
Sports fishing boat used for the trial



Bathymetry of the slope offshore from Imperia, water depths from 40m to 400m



Shallow water sidescan capability of the SWATHplus-L



Slope 120m to 350m showing increased ranges with depth