

Location:	Mississippi River, New Orleans, USA
Date:	January 2007
System Used:	SWATHplus-H 468 kHz

SWATHplus-H demonstration in the Mississippi River, New Orleans, during Underwater Intervention 07.

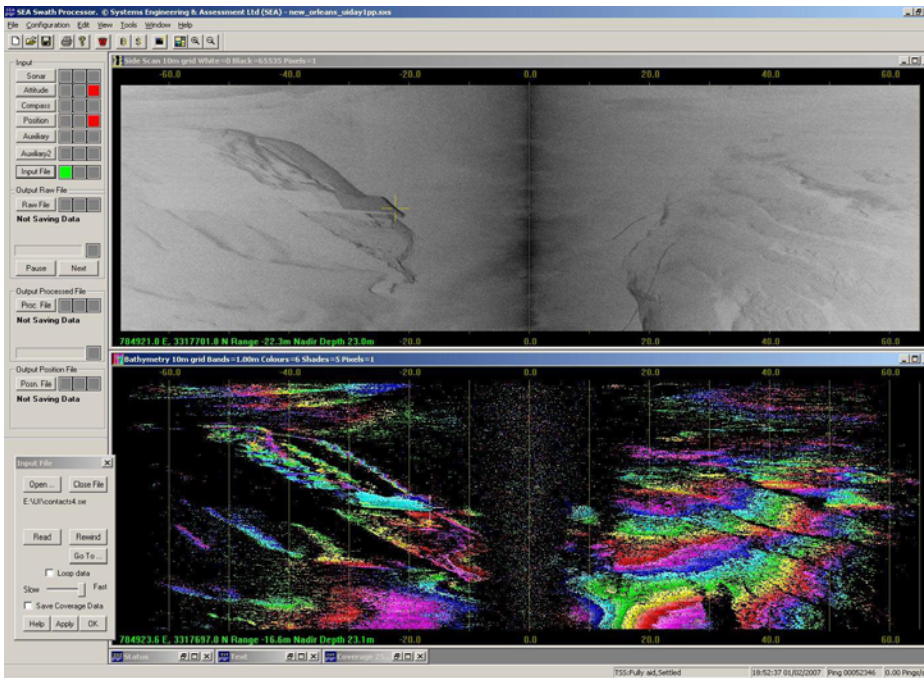
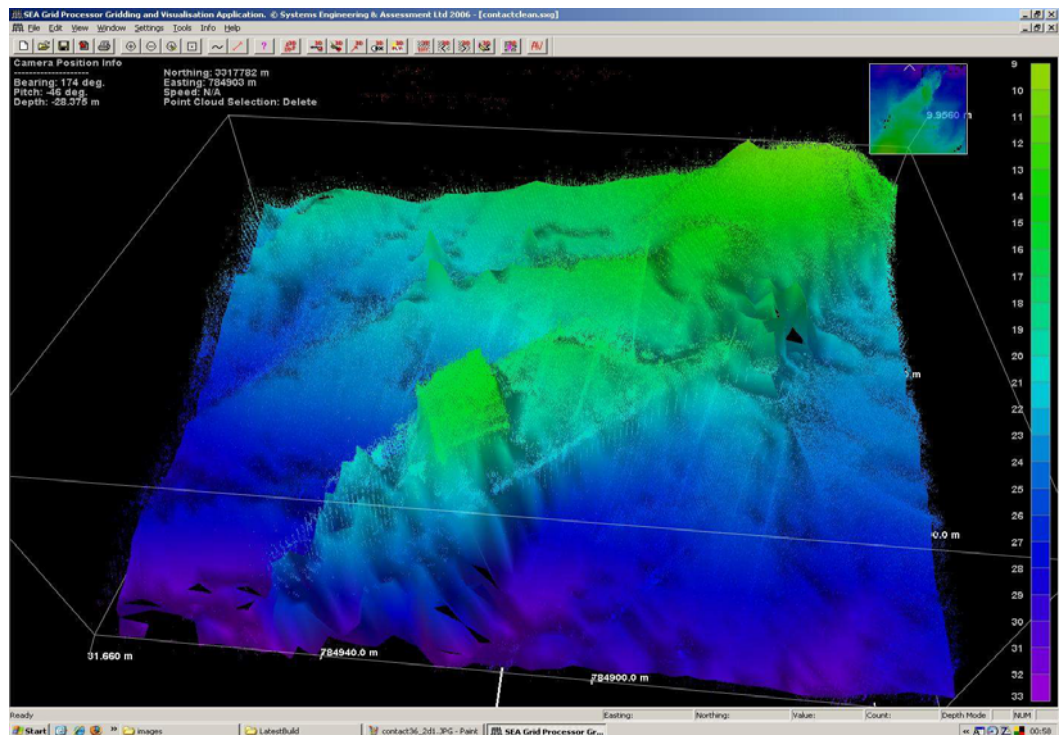
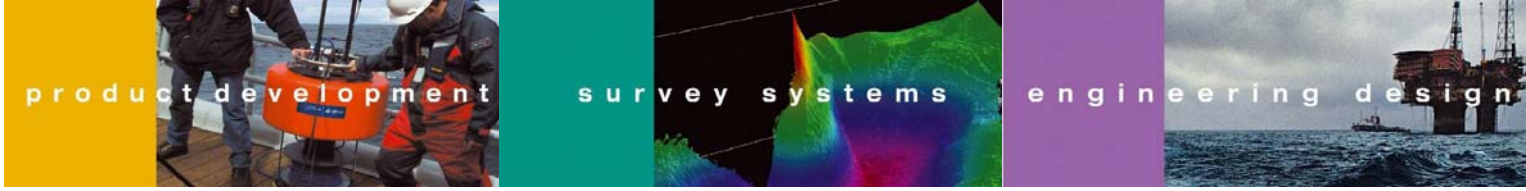


image of a large wreck with a wrecked barge laying over it



3d bathy view of shipwreck with barge laying on top of it



Survey Note No.: 0706

This page intentionally left blank



Email: info@sea.co.uk

SEA Copyright 2008



Web: www.sea.co.uk