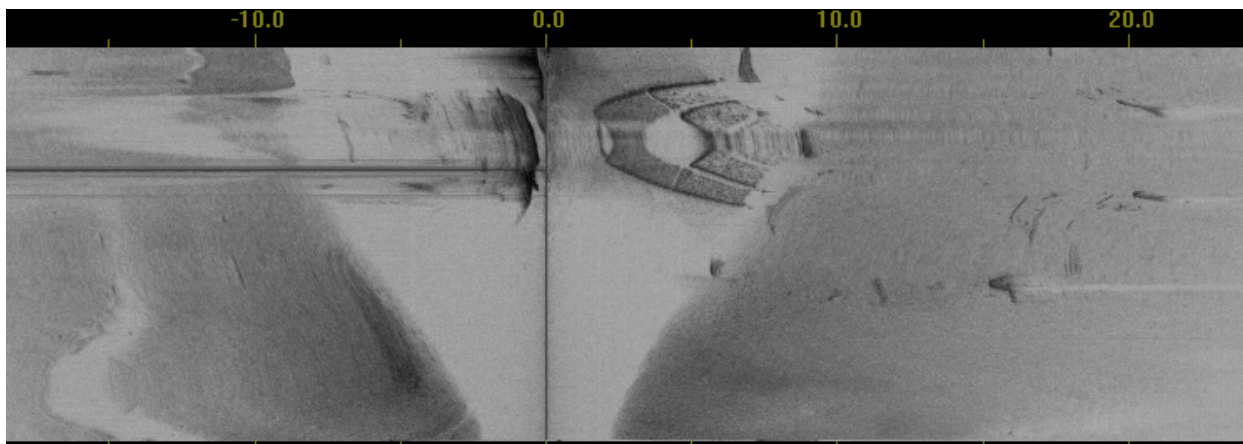
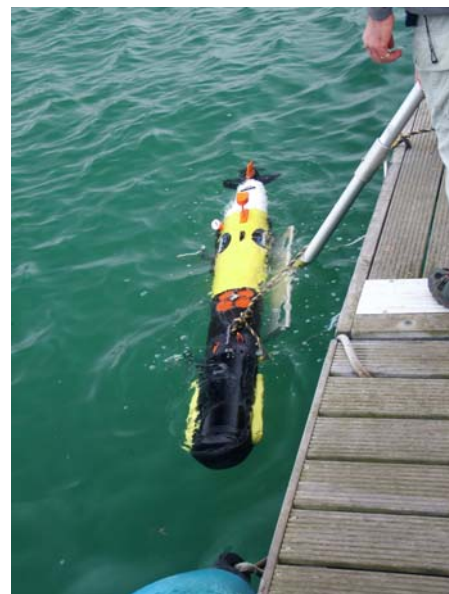


Location:	<b>Empress Dock, Southampton, UK</b>
Date:	<b>March 2008</b>
System Used:	<b>SWATHplus RS100 operated on REMUS 100</b>
Ancillaries:	<b>Kearfott T16</b>

SWATHplus RS100 sea trial with REMUS 100 autonomous underwater vehicle (AUV). Dredge scours on the floor of Empress Dock mapped and imaged. Area approximately 100m by 100m surveyed in less than 5 minutes run-time; about 2 hours on site. Motion sensing and positioning from a Kearfott inertial navigation system (INS) fitted to the REMUS vehicle. Data processing and imaging using the SWATHplus software suite.



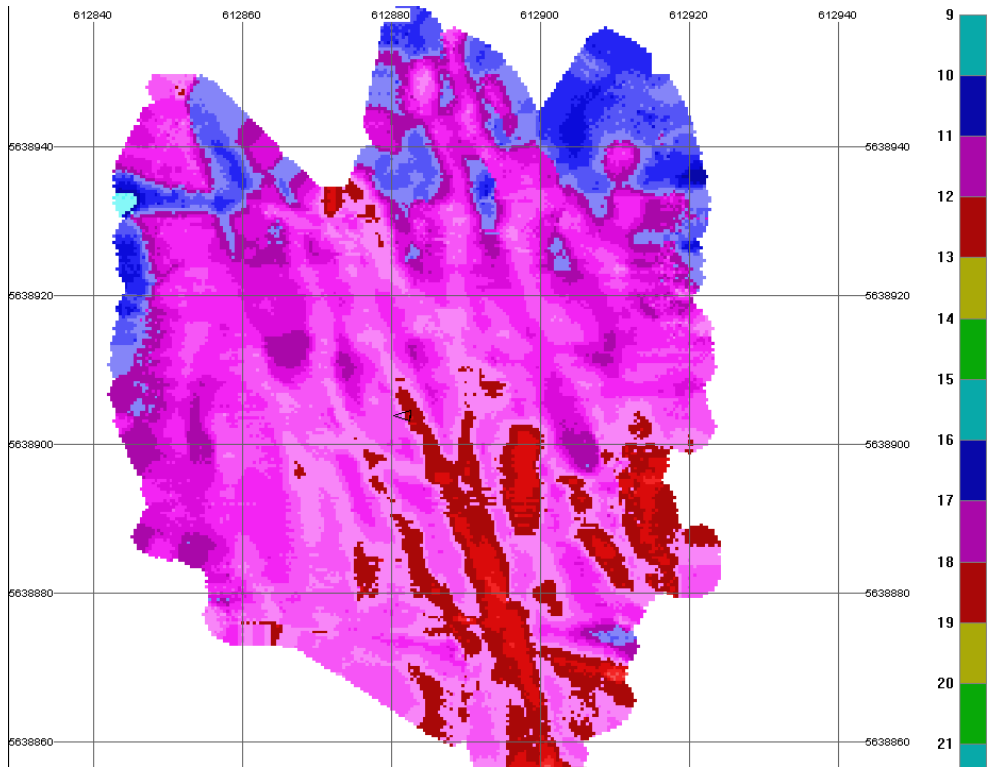
*RS100 fitted to REMUS100  
– preparation for trial*



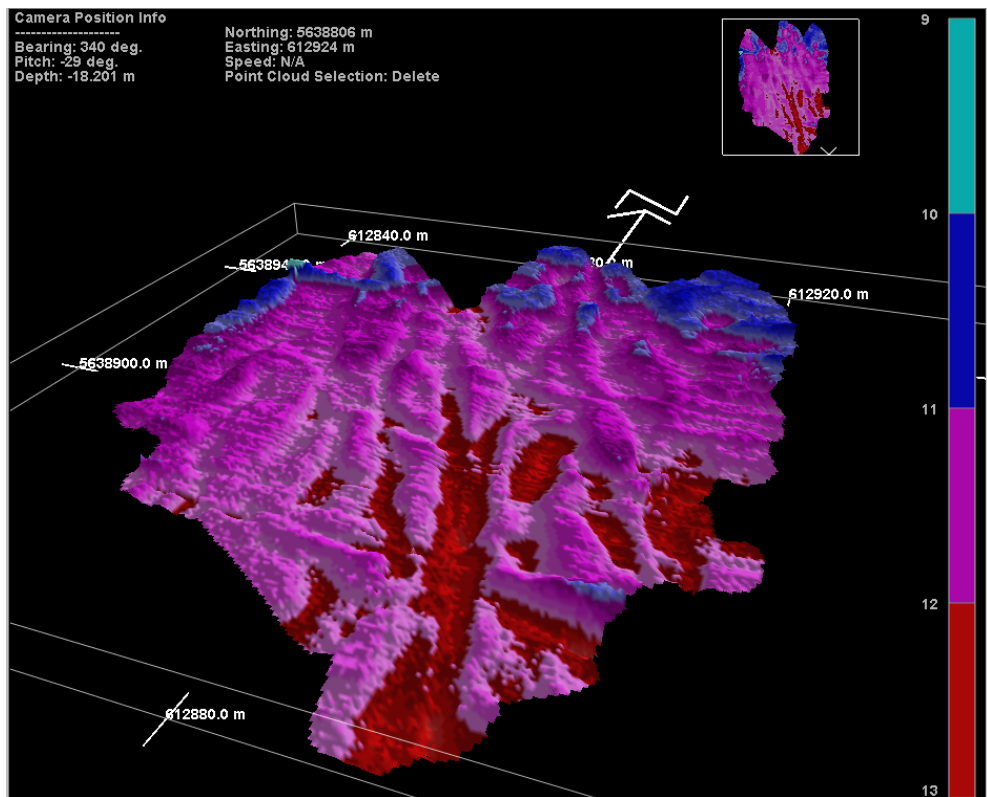
*Sidescan view of ship hull*



Survey Note No.: 0801



*2d bathymetry of Empress Dock*



*3 bathymetry of Empress Dock*



Email: [info@sea.co.uk](mailto:info@sea.co.uk)

SEA Copyright 2008



Web: [www.sea.co.uk](http://www.sea.co.uk)